



# MONTHLY MEMBERSHIP PROGRESS REPORT

District 26 M6

Results as of: 06/30/2019

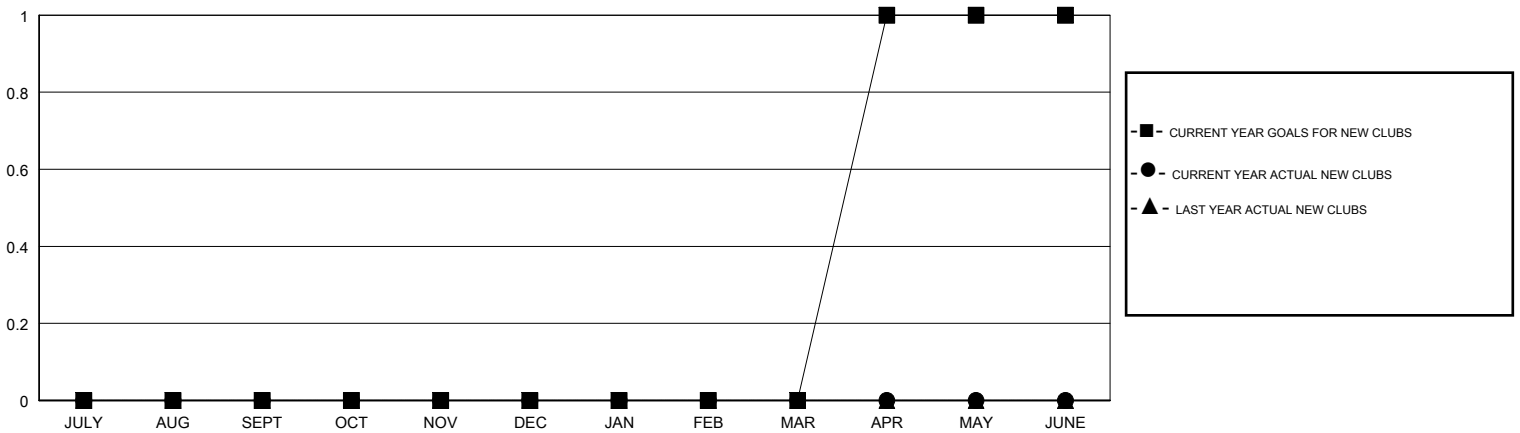
GMT: OPEN

LOCATION MISSOURI

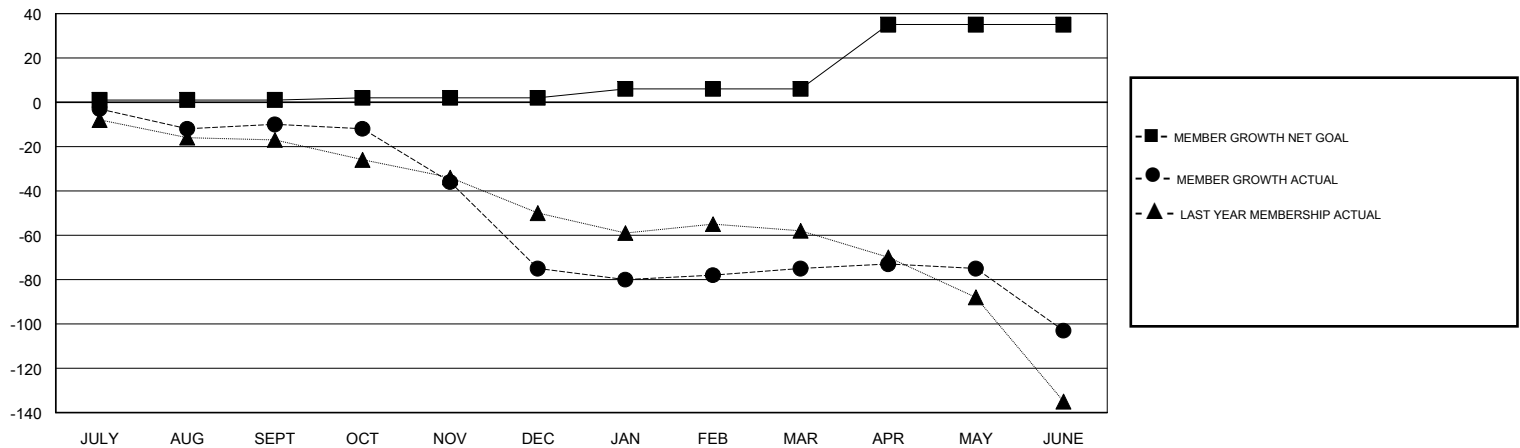
GMT CA

Clubs				Members			
RESULTS FOR 2018-2019				RESULTS FOR 2018-2019			
QUARTER	NEW CLUB GOAL	NEW CLUBS	DROPPED CLUBS	QUARTER	MEMBER GROWTH NET GOAL	MEMBER GROWTH ACTUAL	DROPPED MEMBERS ACTUAL (including transfers)
JULY/AUG/SEPT	0	0	0	JULY/AUG/SEPT	1	18	25
OCT/NOV/DEC	0	0	2	OCT/NOV/DEC	1	8	73
JAN/FEB/MAR	0	0	0	JAN/FEB/MAR	4	17	16
APR/MAY/JUNE	1	0	0	APR/MAY/JUNE	29	32	56

GOALS AND ACTUAL NEW CLUBS CUMULATIVE



GOALS AND ACTUAL MEMBERS CUMULATIVE



DROPPED CLUBS: 2	26 CLUBS OF 43 ADDED 1 OR MORE NEW MEMBERS	<u>GENDER DISTRIBUTION</u> MALE 618 (67.32%) FEMALE 300 (32.68%) Women Percentage Fiscal Year Goal: 45%
<u>DROPPED MEMBERS</u> DECEASED 15 CLUB CANCELLED 6 OTHER 149 TOTAL 170	<a href="#">CLICK HERE FOR CUMULATIVE MEMBERSHIP DATA</a>	TOTAL FAMILY UNIT MEMBERS 185 FAMILY MEMBERS PAYING HALF DUES 93